

State of Wyoming Corner Record

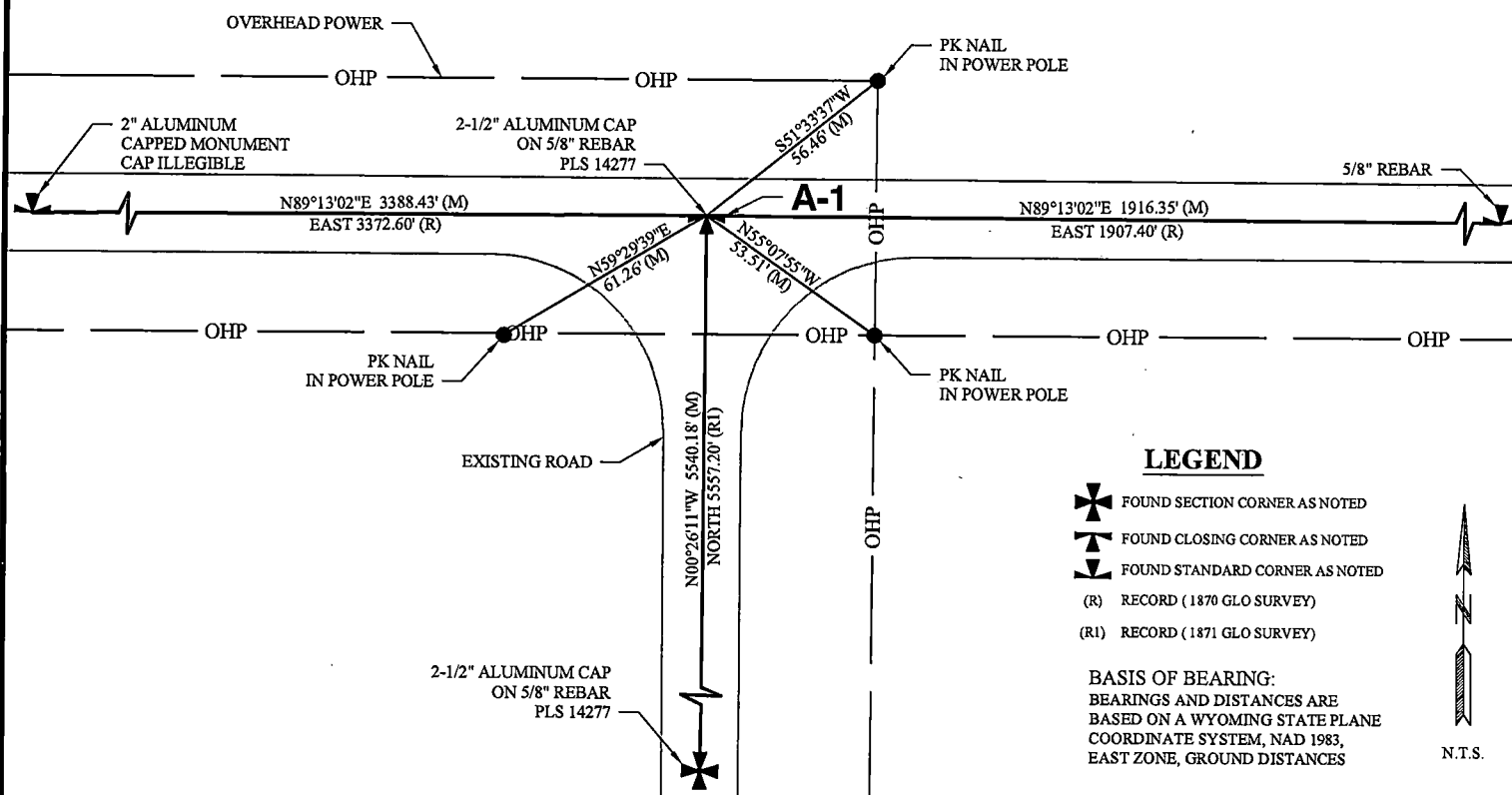
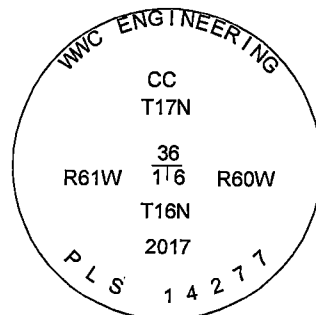
(In compliance with the CORNER PERPETUATION AND FILING ACT, Wyoming Statutes, 1997, Section 33-29-140, et seq., and the Rules and Regulations of the Board of Registration for Professional Engineers and Professional Land Surveyors)

Reverse side of this form may be used if more space is needed.

Record of original survey and citation of source of historical information (if corner is lost or obliterated.) Description of corner monumentation evidence found and/or monument and accessories established to perpetuate the location of this corner. Sketch of relative location of monument, accessories, and reference points with course and distance to adjacent corner(s) (if determined in this survey). Method and rationale for reestablishment of lost or obliterated corner.

EVIDENCE RECORD: 1871 GLO Survey: North along the east boundary of section 1, 84.20 chains. Set a granite boulder 23"x12"x10" for closing corner to township 16 north, range 60 & 61 west.

EVIDENCE FOUND: July 2017: Granite boulder from 1871 GLO survey not found. Set a 2 1/2" aluminum cap marked as shown on a 5/8" rebar, 25" long, 7" below road surface at single proportionate position between standard corner common to sections 35 & 36 and standard corner common to sections 36 & 31.



LEGEND

- FOUND SECTION CORNER AS NOTED
- FOUND CLOSING CORNER AS NOTED
- FOUND STANDARD CORNER AS NOTED
- (R) RECORD (1870 GLO SURVEY)
- (R1) RECORD (1871 GLO SURVEY)

BASIS OF BEARING:
BEARINGS AND DISTANCES ARE BASED ON A WYOMING STATE PLANE COORDINATE SYSTEM, NAD 1983, EAST ZONE, GROUND DISTANCES



Date of Field Work: July 26, 2017

Office Reference: 2017-135

CROSS INDEX DIAGRAM

	1	2	3	4	5	6	7	8	9	10	11	12	13	14	15	16	17	18	19	20	21	22	23	24	25
A	●																								
B																									
C		6					5						4												1
D																									
E																									
F																									
G			7					8						9											12
H																									
J																									
K																									
L			18						17						16										13
M																									
N																									
O																									
P				19						20															24
Q																									
R																									
S																									
T			30																						25
U																									
V																									
W																									
X				31																					36
Y																									
Z																									

Land Surveyor / Firm / Address

Dirk Thompson

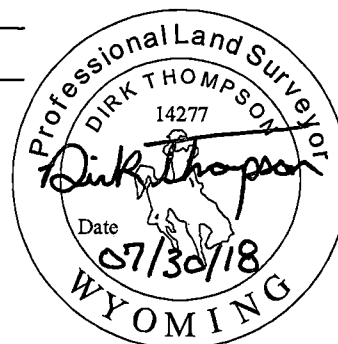
WWC Engineering

1849 Terra Avenue

Sheridan, WY 82801

Telephone: (307) 672-0761

This corner record was prepared by me or under my direction and supervision.
SEAL & SIGNATURE



RECP #: 739869
RECORDED 10/1/2018 AT 1:31 PM BK# 2598 PG# 303
Debra K. Lee, CLERK OF LARAMIE COUNTY, WY PAGE 1 OF 1

Corner Name: Northwest Corner
SBRPEPLS/PLSW: March 1994; PLSW January 1998

Section: 6 T 16N R 60W; 6TH P.M. Cross-Index No.: A-1